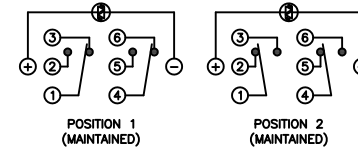
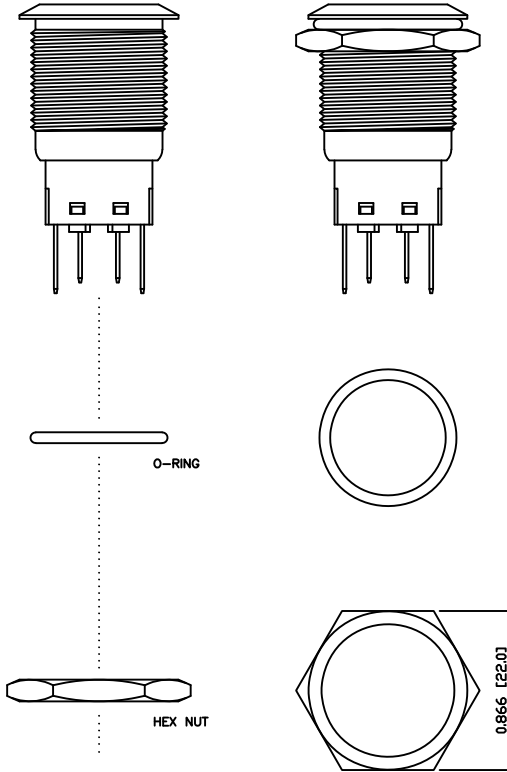
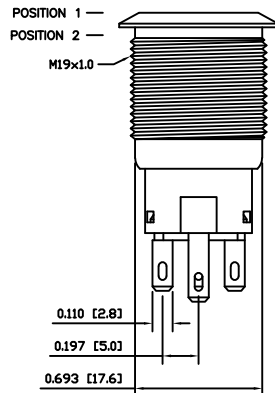
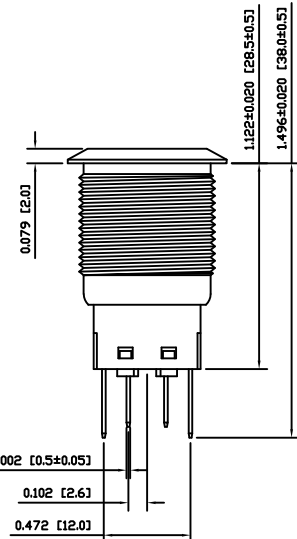


**SCHEMATIC**



**SPECIFICATIONS**

- FUNCTION:**  
2P2T ON-ON
- RATING:**  
2A 24VDC
- ILLUMINATION VOLTAGE:**  
1.8V 20mA
- CONTACT RESISTANCE:**  
Initial: 50mΩ Max. at 1A 12VDC
- INSULATION RESISTANCE:**  
1,000MΩ Min. at 500VDC
- DIELECTRIC STRENGTH:**  
2,000VAC Min. for 1 Minute
- ELECTRICAL LIFE:**  
50,000 Cycles
- MECHANICAL LIFE:**  
1,000,000 Cycles
- TEMPERATURE:**  
Operating: -20°C to 70°C
- INGRESS PROTECTION:**  
IP65
- APPROVALS:**  
**RoHS**  
COMPLIANT



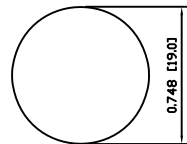
**MATERIALS**

- BUSHING:**  
Aluminum
- BASE:**  
Polycarbonate (PC)  
Polybutylene Terephthalate (PBT)
- ACTUATOR:**  
Aluminum  
Polycarbonate (PC)
- HARDWARE:**  
Nickel Plated Brass (H59)
- SEALING:**  
Silicone Rubber
- INNER ASSEMBLY:**  
Polyoxymethylene (POM)  
Phosphor Bronze
- SPRING:**  
Spring Steel
- CONTACTS:**  
Silver/Cadmium Oxide (AgCdO)
- TERMINALS:**  
Silver Plated Brass (H62)  
Silver Plated Phosphor Bronze
- O-RING:**  
Silicone Rubber

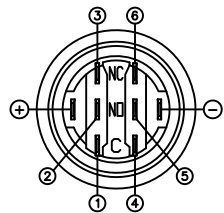
**COLORS AND FINISH**

- BEZEL:**  
Black  
Anodized Finish
- ACTUATOR:**  
Black  
Anodized Finish
- ILLUMINATION:**  
Red (Forward)  
Red (Reverse)
- MARKING:**  
None

**SUGGESTED PANEL CUTOUT**



MAXIMUM PANEL THICKNESS: 0.433 [11.0mm]



BODY	A	09/07/24	CAB
COLORS	A	09/08/05	CAB
MATERIALS	B	09/10/16	CAB
SPECIFICATIONS	A	09/07/27	CAB
REFERENCE	REV.	DATE	BY

THE INFORMATION CONTAINED IN THIS DOCUMENT IS PROPRIETARY TO E-SWITCH AND IS NOT TO BE COPIED OR TRANSFERRED

C	UPDATED RATING TO 2A @ 24VDC	23804	10/15/18	MJR
B	CORRECTED TERMINAL MATERIALS AND TERMINALS	PCRD0187	09/10/21	CAB
A	INITIAL RELEASE	PCRD0051	09/08/05	CAB
REV.	DESCRIPTION	PCR	DATE	DRAWN BY

DIMENSIONS	
INCHES [MILLIMETERS]	
GENERAL TOLERANCES	
±0.008 [±0.2] / ±1'	
SCALE	PROJECTION
DRAWING NOT TO SCALE	1:1

<b>PV4F2G011-311</b>		
DRAWING NUMBER	DATE	REVISION
52-PV4F2G011311	OCTOBER 21, 2009	C